

# THEBRAIN<sup>®</sup> 7

The Ultimate Digital Memory

## Transitioning from Version 6 to Version 7

Companion for transitioning to Version 7 of PersonalBrain.  
Posted October, 2011

© 2011. TheBrain Technologies LP. All Rights Reserved.

TheBrain, PersonalBrain, Brain, Thoughts, and Work the Way You Think are trademarks or registered trademarks of TheBrain Technologies LP. Other trademarks or service marks appearing herein are the property of their respective owners.

# Table of Contents

<b>Introduction .....</b>	<b>2</b>
About this Guide .....	3
<b>Starting TheBrain 7 with an Older Brain .....</b>	<b>4</b>
<b>PersonalBrain is now TheBrain.....</b>	<b>4</b>
<b>Redesigned Display .....</b>	<b>4</b>
Selecting Links.....	4
Link Notes and Attachments .....	4
Link Directionality.....	6
The Link Tool .....	8
Other Link Enhancements.....	8
<b>WebBrain Integration .....</b>	<b>10</b>
Start Up .....	10
Brain Management.....	10
<b>Additional Enhancements.....</b>	<b>12</b>
Performance .....	12
Custom Reports.....	12
Notes .....	12
Maximize Plex Button .....	12
Transparency Button.....	13
Forget/Delete Button.....	13
Instant Activate .....	13
Calendar .....	13
SiteBrain .....	14
Linux Drag and Drop.....	14
Miscellaneous Enhancements.....	14

# Introduction

Welcome to TheBrain 7, the latest evolution of the ultimate digital memory! This version makes connecting your thinking to your work patterns even easier, providing optimal viewing and fluid brainstorming. Major additions include:

- Curvy links can have notes and attachments
- Multi-directional links
- Integration with WebBrain
- New SiteBrain features
- New Calendar with multi-day event display
- And many other enhancements ...

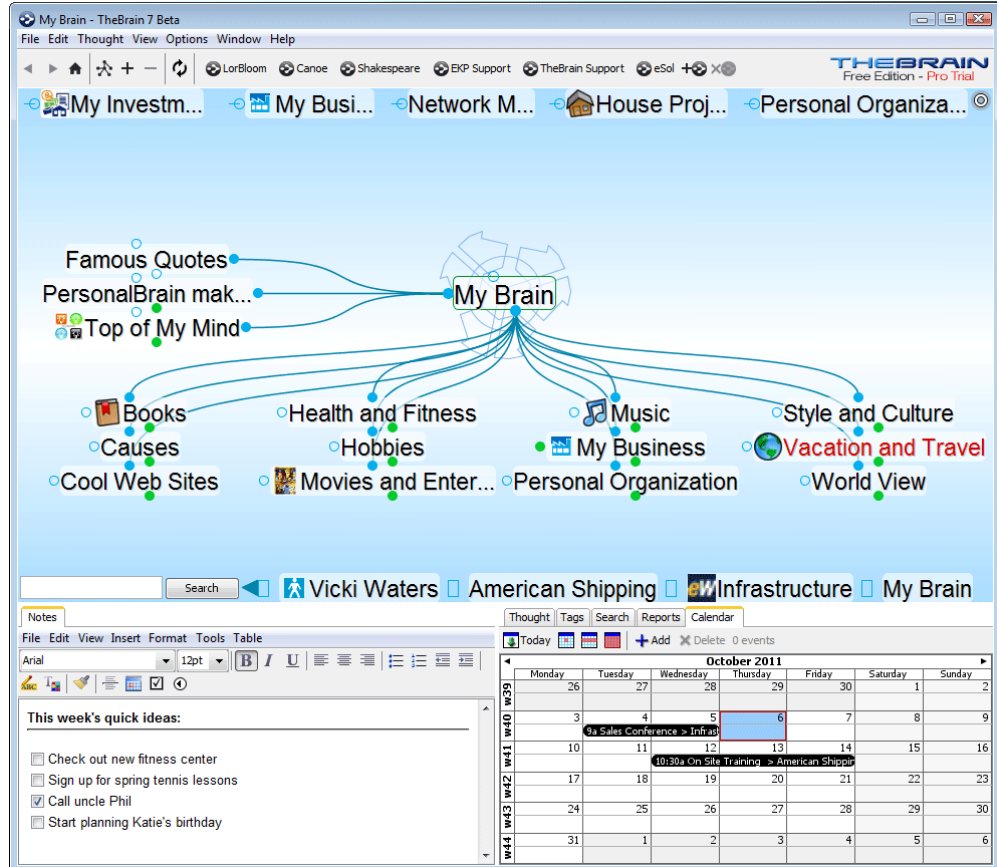


Figure 1. PersonalBrain Interface



---

**TheBrain 7 is backwards compatible, however once you open a Brain in version 7, some features will be incompatible with earlier versions.** Be sure to make a backup copy of your Brain prior to opening it with version 7. If you would like to roll back to version 6, you will lose any link notes and/or link attachments that were created in version 7. Also, after you reinstall version 6, you will need to rebuild your instant activation index by clicking on the **File** menu, click **Utilities** and select **Refresh Instant Activation Index**.

---

## About this Guide

This guide covers the new features and changes in TheBrain 7 that have been made since version 6. It is intended for people who are already familiar with version 6.

## Starting TheBrain 7 with an Older Brain

---

You can make a backup copy of your Brain by creating a BrainZip. For more information on how to create a BrainZip, watch our video tutorial at <http://www.thebrain.com/support/tutorials/sharing/brainzips/> or see “Creating a BrainZip” in the PersonalBrain 6 User Guide.

## PersonalBrain is now TheBrain

---

The client software is now simply known as TheBrain. There is no longer a Core edition. Instead, there is the Free edition and the Pro edition.

## Redesigned Display

---

The new layout engine featuring curved link lines makes it easier to understand the relationships between Thoughts.

### Selecting Links

Links are easier to highlight and click:

- Click a link to select it. The link will be displayed, animated and outlined prominently. Unrelated Thoughts and links will temporarily fade into the background.
  - Click on the background or another Thought to unselect the highlighted link.
- Clicking on a selected link shows the context menu for the link. You can also right-click on a link to show the context menu without selecting it.

### Link Notes and Attachments

Just like Thoughts, links can now have notes and attachments.

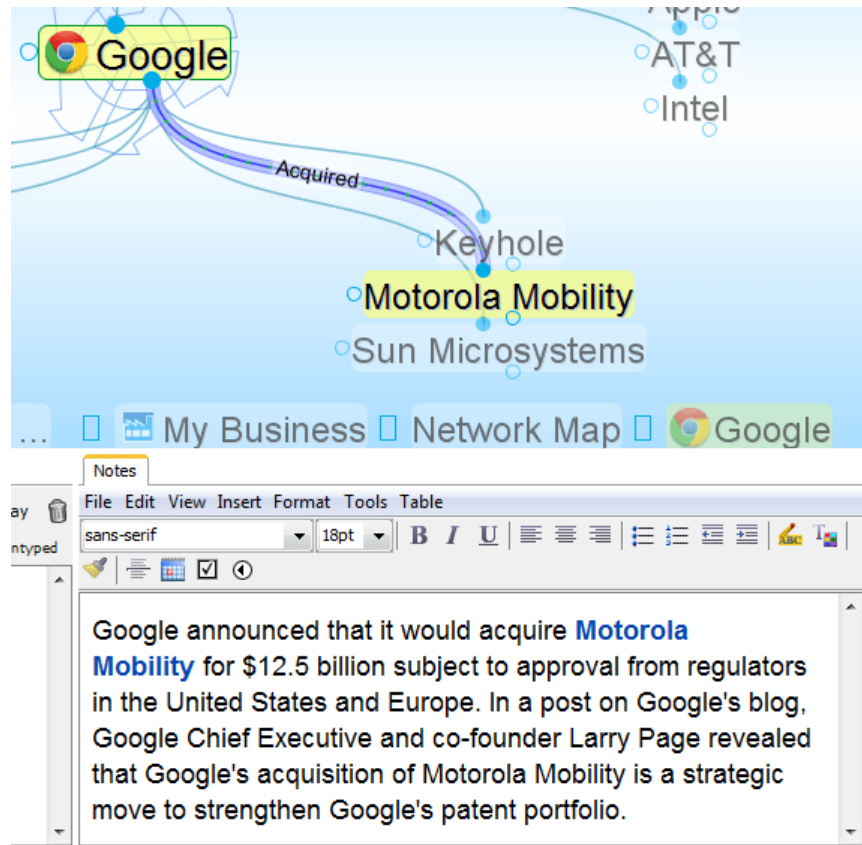


Figure 2. Link Notes

- When a link is highlighted or selected, the Notes and Link tabs show the notes, properties, and attachments associated with the link.
- Floating windows can also be opened for link properties, attachments and notes.

## Link Directionality



Figure 3. Directed Links

Links are by default non-directed, but they can be set to directed or one-way using the icons in the Link tab.

- Non-directed links do not show any indication of either Thought being the source of the link.
- Directed links show arrows on them and animate when touched, showing movement from the source Thought toward the target Thought.
  - Directed links are particularly useful when using link labels. For example, with a link label “inspired” looking at the link direction shows which Thought was the source of inspiration.

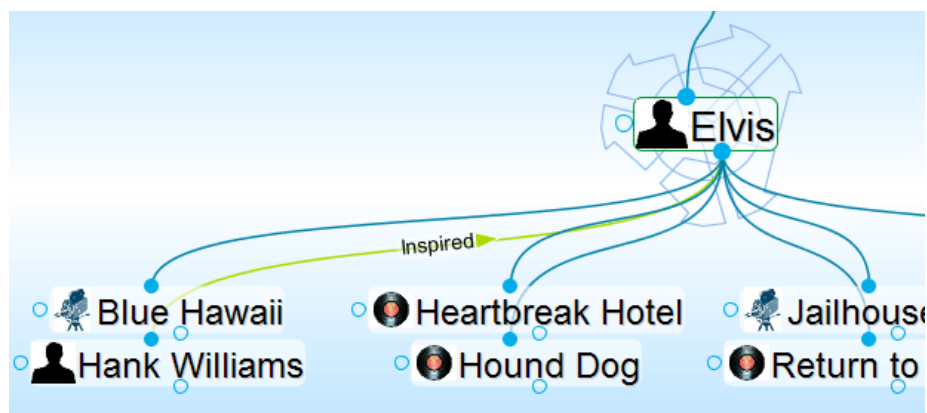


Figure 4. Hank Williams inspired Elvis

- This is also very useful when representing flows between items, such as financial relationships.
- One-way links appear when the source of the link is active and do not appear when the target Thought is active unless the source Thought was already visible.
- One-way links are indicated by an arrow with a rectangle at one end.

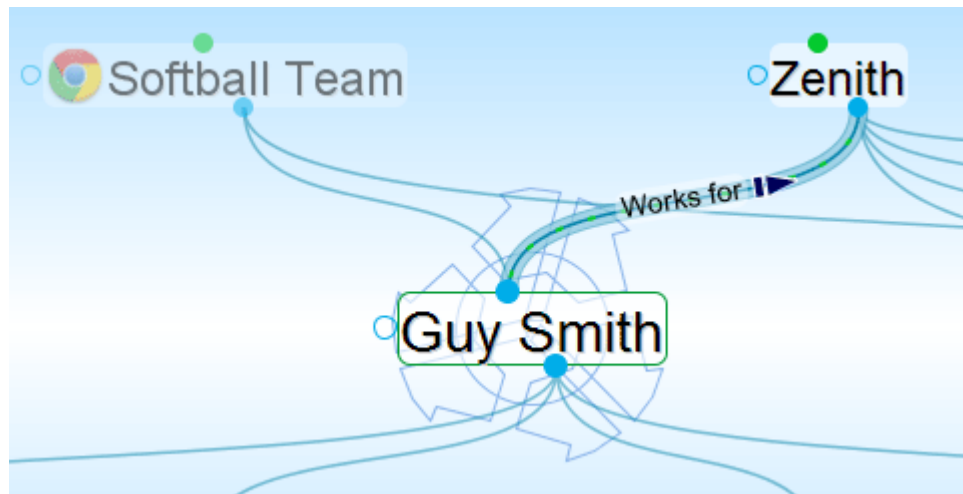


Figure 5. One-way link

- One-way links are useful in cases where Thought A is relevant when Thought B is active, but Thought B is not relevant when Thought A is active.
  - For example, you may want to see what company a person worked for when the person is the active Thought. However, for a large company with thousands of employees, you may not want to see all of the employees when that company is the active Thought.
  - Creating a “works for” link type and making it one-way enables this.
- Link direction can be set on links as well as link types. Direction set on a link type is inherited by instances of the type and can be overridden by the instance.
- Click the arrow icon on the link tab to switch a link between non-directed, directed, and directed in the reverse.
- Use the One-way checkbox to make a link one-way. This option must be unchecked in order to make a link non-directed.



## The Link Tool

The Thought tool now doubles as the Link tool and changes depending on what is selected or highlighted.

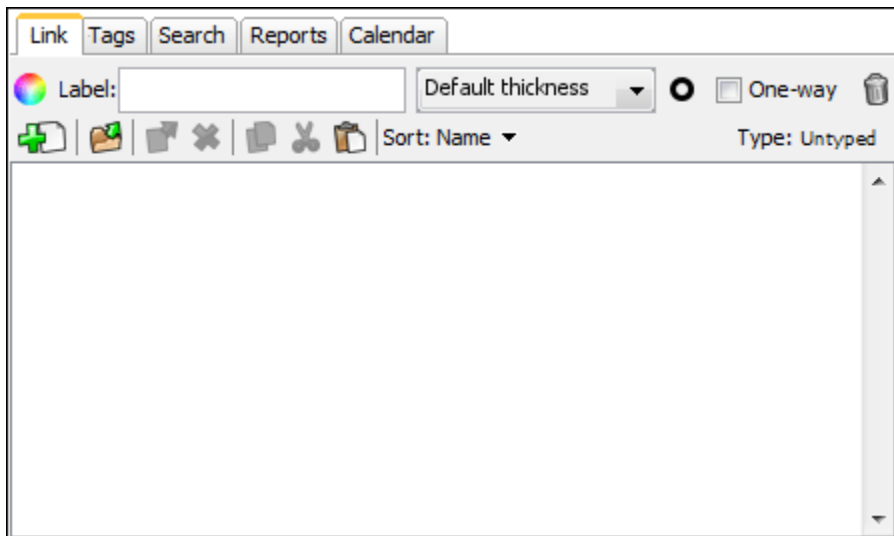


Figure 6. Link Tool Tab

- When a link has focus, the inapplicable controls for icon, name, and privacy do not appear. New controls to change link direction, toggle unidirectional state and set link thickness appear.

## Other Link Enhancements

- Link labels are always displayed, even when not highlighted.

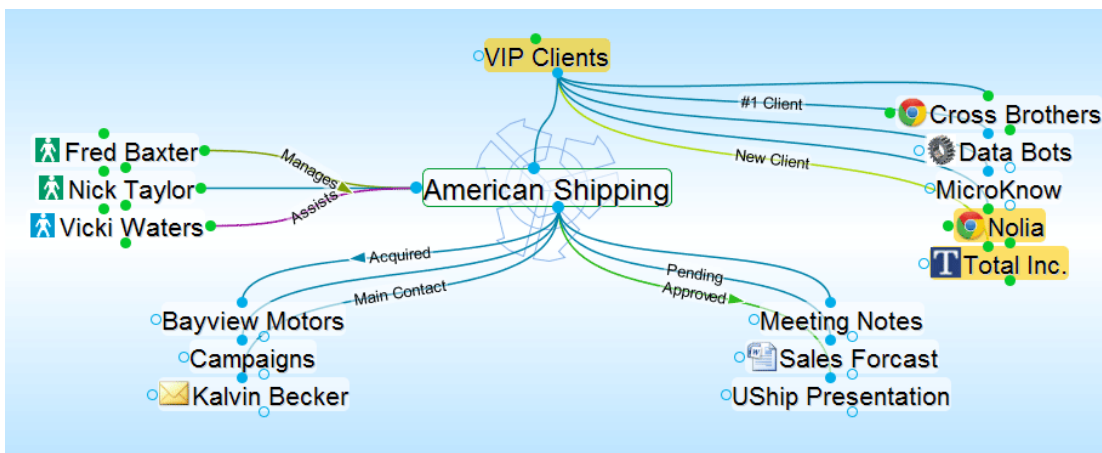


Figure 7. Link labels being displayed

- Label, color and thickness can now be set independently of type.

- If set to default values, these properties are inherited from the type. If set, they override the values of the type.
- Links with a thickness of up to 15 pixels wide are now supported.
- Link types can be created from the link context menu.
- The default thickness of links is configurable in Preferences > Look & Feel.

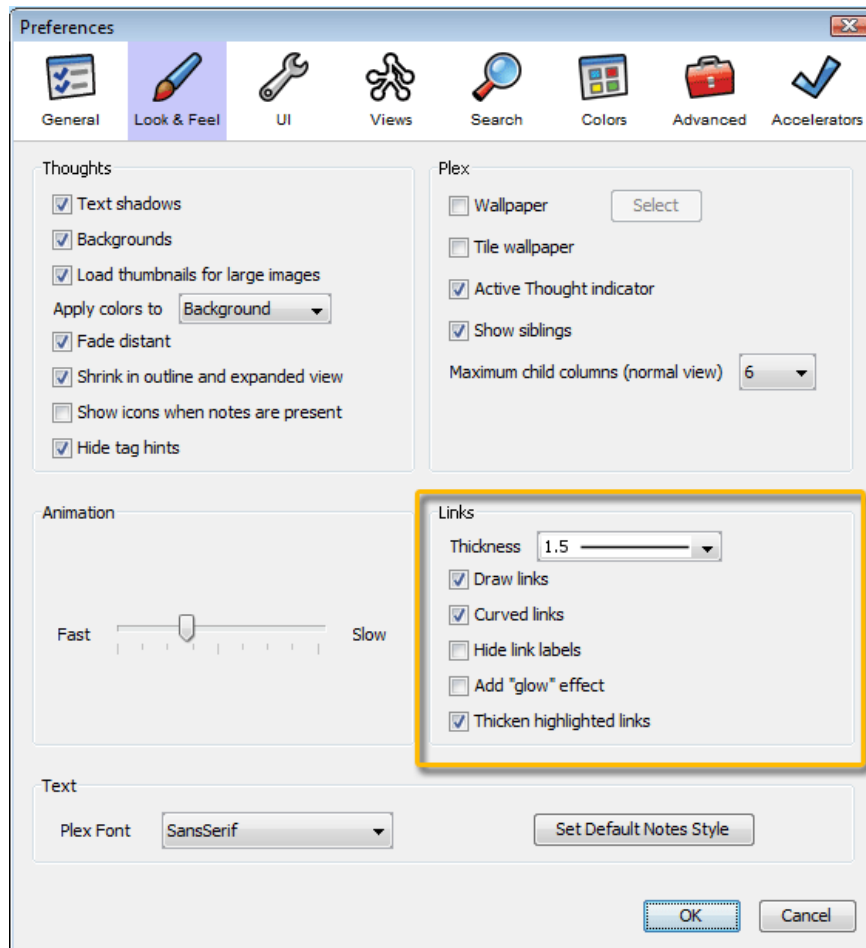


Figure 8. Default link settings

- Copy and pasting of Thoughts also copies the links between them along with any notes, attachments, and other properties associated with the links.
- Synchronization updates links and their data automatically between Brains. Advanced link properties, including direction, one-way links, notes, and attachments are not available via the Web client.

# WebBrain Integration

---

## Start Up

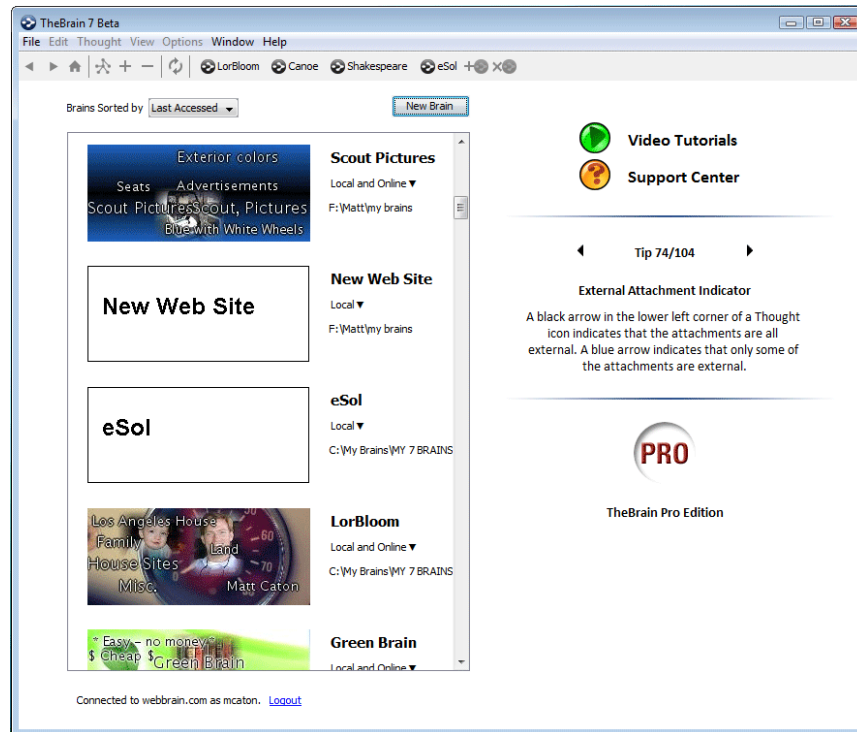
Upon startup, you must login to your WebBrain account. This enables integration with any subscriptions you may have. The startup dialog also features a sign up capability or an option to not connect to any server.



Figure 9. TheBrain 7 startup

## Brain Management

When there is no Brain open, TheBrain shows a list of all your available Brains, both locally and online.

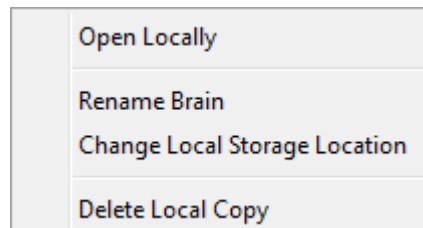


**Figure 10. Available Brains**

By default, Brains are listed according to how recently they have been accessed. The list of Brains can also be sorted alphabetically. All Brains that are locally available are shown first, followed by Brains that are only available online.

If a Brain is not shown in the list, then it can be opened by clicking on File > Open Brain. The next time the list is shown, it will include Brains from the new location.

In the list, click on a Brain to open it. The status of whether each Brain is available locally, online, or both is also displayed. Right-clicking on a Brain or clicking on the status displays a menu of options for that Brain as seen below.



**Figure 11. Local Brains**

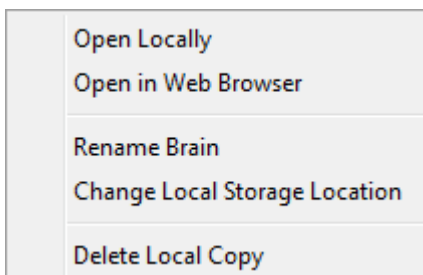


Figure 12. Local and Online Brains

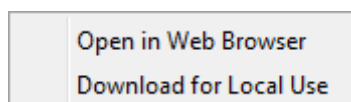


Figure 13. Online Brains

## Additional Enhancements

---

### Performance

- Animation and display optimized for speed.
- Database storage optimized for speed.
- Calendar performance optimized.

### Custom Reports

Added the ability to report on Thoughts that use link types in custom reports.

### Notes

Improved conversion of notes to text when copying Thoughts as an outline with notes.

### Maximize Plex Button

A button in the upper right hand corner of the plex will maximize the plex area within the application. Click again to minimize.

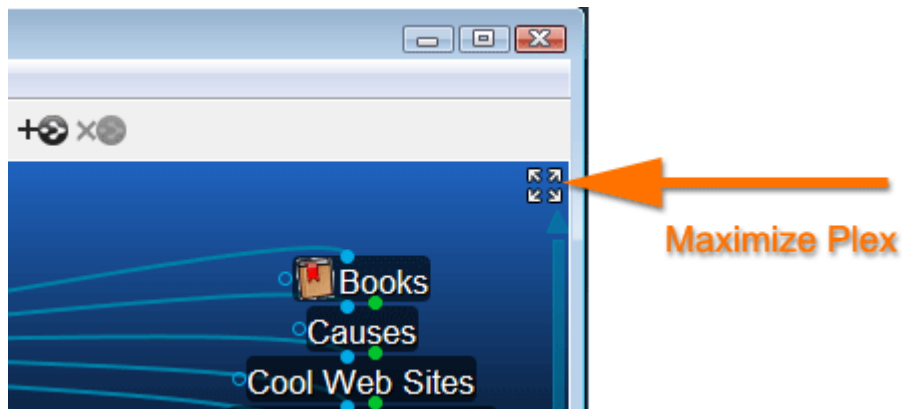


Figure 14. Maximize Plex Button

### Transparency Button

The Transparency button has been removed. This function is now accessed via the Window menu or the background context menu.

### Forget/Delete Button

A trash can icon has been added to the Thought Tab for forgetting or deleting a Thought.

### Instant Activate

- Types are prioritized in results above normal Thoughts, just like Tags.
- Tags can be found using multiple word queries, not just the first word.

### Calendar

- Events that span multiple days are drawn in the calendar as such, making them much easier to see and understand.

October 2011			
Tuesday	Wednesday	Thursday	Friday
27	28	29	30
4	5	6	7
9a Sales Conference > Infrastructure			
11	12	13	14
	10:30a On Site Training > American Shipping		
18	19	20	21

**Figure 15. Multiple day calendar event**

- Calendar events and popups can now be edited with the keyboard.

**SiteBrain**

A completely rebuilt version of SiteBrain is included, featuring broader browser compatibility, faster performance, and improved rendering.

**Linux Drag and Drop**

Support for drag and drop of files and URLs in Linux.

**Miscellaneous Enhancements**

- Improved expanded view layout.
- Improved sync progress feedback.
- Brain metadata including the name and home Thought are now synced.
- Up to 100 themes can be saved.
- Ability to undo and redo various commands in a single step: paste image and URL image, delete multiple Thoughts, delete multiple files.
- Proxy settings can now be configured in the Preferences > Advanced area...
- Many other enhancements...